

HIGH QUALITY OUTSTANDING PERFORMANCE

ENTRANCE MATTING SYSTEMS



 Handmade
in Germany



GEGGUS[®]

www.geggus.ie



BIG

There is hardly a place as important for making a good first impression as the entrance to a building. Entrance areas with a generous, exquisite and impressive appearance give visitors a taste of the spirit of the building and the people who live or work in it. The architecture, design and interior create an unmistakable atmosphere, in which every little detail is significant.

The entrance mats are one of these details. In harmony with elegant marble, granite or parquet floors, they make a statement for a pleasant and attractive ambience. And that happens to be our speciality. As a family company, we have been meeting the tough demands placed on the design, functionality and safety of entrance mats for more than 75 years. This is backed up by a tradition of commitment to uncompromising quality, and a passion for entrance matting systems that make individual wishes come true in the best possible way.

CONTENTS

- 3** THINK BIG!
- 4** Table of contents
- 7** A company with a history.
And a future.
- 7** Our understanding of quality.
- 9** Sustainable step by step.
With no ifs or buts.
- 10** Create a wow effect. We will
make your entrance area a highlight.
- 13** Smart planning and construction.
BIM-based work.
- 14** Have a look!
References
- 16** For systematic protection.
Assured value for money.
- 17** Three clean-off zones.
Combined in a single solution.
- 18** The ideal level of protection.
In every area.
- 21** PREMIUM or STANDARD?
The crucial difference.
- 23** A question of profile.
For all loads.
- 24** Fulfilling all wishes.
Exclusive colouring.
- 26** Upgrade to cleaning effect.
Thanks to scrapers and brushes.
- 29** Developed for tomorrow.
Already outstanding today.
- 30** Seeing and feeling.
Orientation with all the senses.
- 32** Perfection in every detail.
High-precision accessories.
- 35** A clear edge.
Thanks to elegant T-bars.
- 36** Ready for the unexpected?
Exclusive one-off products.
- 39** Bold, sweeping design.
With no rough edges.
- 40** More than just a mat.
Indispensable for your image.
- 42** Thinking big.
Providing great support.
- 44** Address | Contact

IMP



A GOOD FIRST

SESSION



QUAL

Mitglied der
DGNB

german
brand
award
22
winner

german
brand
award
17
winner



Top Clean TREND® XL
GREEN MOTION

IC0 2
NIC 0
AWA 1
RDS 7
INTERIOR
INNOVATION
best of best

A COMPANY WITH A HISTORY. AND A FUTURE.

In terms of their diversity and different areas of use, our entrance matting systems particularly stand for one thing: outstanding quality. We don't just see ourselves as a high-performance production location. Rather, we are a manufacturer of impressive entrance areas that meet – and even exceed – high demands for exclusive spaces.

OUR UNDERSTANDING OF QUALITY.

Our products are manufactured entirely in Germany using selected materials from German suppliers – almost all of whom are ISO-certified market leaders in their sectors. Our specialists are able to achieve precise production through excellent workmanship, innovative technology, extensive expertise and a great deal of experience. Thanks to our continually optimised supply chains, we not only promise short delivery times, but also adhere to them. For all our national and international customers, no matter whether they require standard or special sizes.

With our team of over 60 employees here at our site in Germany, we can advise you on planning and implementation, and guarantee fast, reliable order processing. All of that is what constitutes our understanding of top-quality production.



ITY

SUSTAINABLE



ELECTRICITY FROM SOLAR POWER

A photovoltaic system on the roofs of the production halls covers 35 % of our total energy demand.



RECYCLED MATERIALS

Our aluminium profiles consist of around 80 % recycled materials and many other products around 35-70 %. We have set ourselves the goal of achieving largely sustainable production from recycled or environmentally friendly materials.



CIRCULAR ECONOMY

For sustainable recycling, we submit waste materials to licensed disposal companies and ensure that discarded entrance mats are recycled.



RESOURCE-SAVING PRODUCTION

When processing our aluminium profiles, we largely do without cooling lubricants, thus avoiding environmentally harmful waste products.



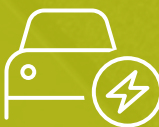
ENERGY-SAVING MEASURES

We reduce our energy consumption by shutting down our systems whenever possible.



CLIMATE-NEUTRAL DISPATCH

Our partner GLS guarantees that the dispatch of our products is completely climate-neutral thanks to efficient reforestation, the use of 100 % green electricity and its own sustainable power generation.



ELECTRIC VEHICLE FLEET

Our vehicle fleet increasingly relies on fully electric and hybrid vehicles and its own charging stations.

SUSTAINABLE STEP BY STEP. WITH NO IFS OR BUTS.

Sustainability is currently at the top of everyone's agenda. And it's been a top priority of ours for some time. We committed ourselves to a consistent sustainability strategy not just recently, but many years ago. We think in terms of sustainability in everything we do – not only in production, but also in administration. In all areas of our company. And with no ifs or buts.

Aiming to reduce our use of resources and energy, as well as the waste and emissions we generate, we apply a range of perfectly coordinated measures that are subject to constant review. From processing recycled aluminium to avoiding particulate matter in the offices. In this way, we are able to keep improving our ecological footprint.



CREATE A WORLD

We'll make your entrance

GER

EXPERTISE

Our planning, advice and implementation are based on experience and in-depth expertise.



IMPACT SOUND

Highly effective insulation technology, one of our core competencies.



DELIVERY

We'll deliver your order quickly, in just 8 working days.



LOW EFFECT.

...e area a major highlight.



WARRANTY

You benefit from a 5-year warranty and thus a high degree of reliability.



SUSTAINABLE

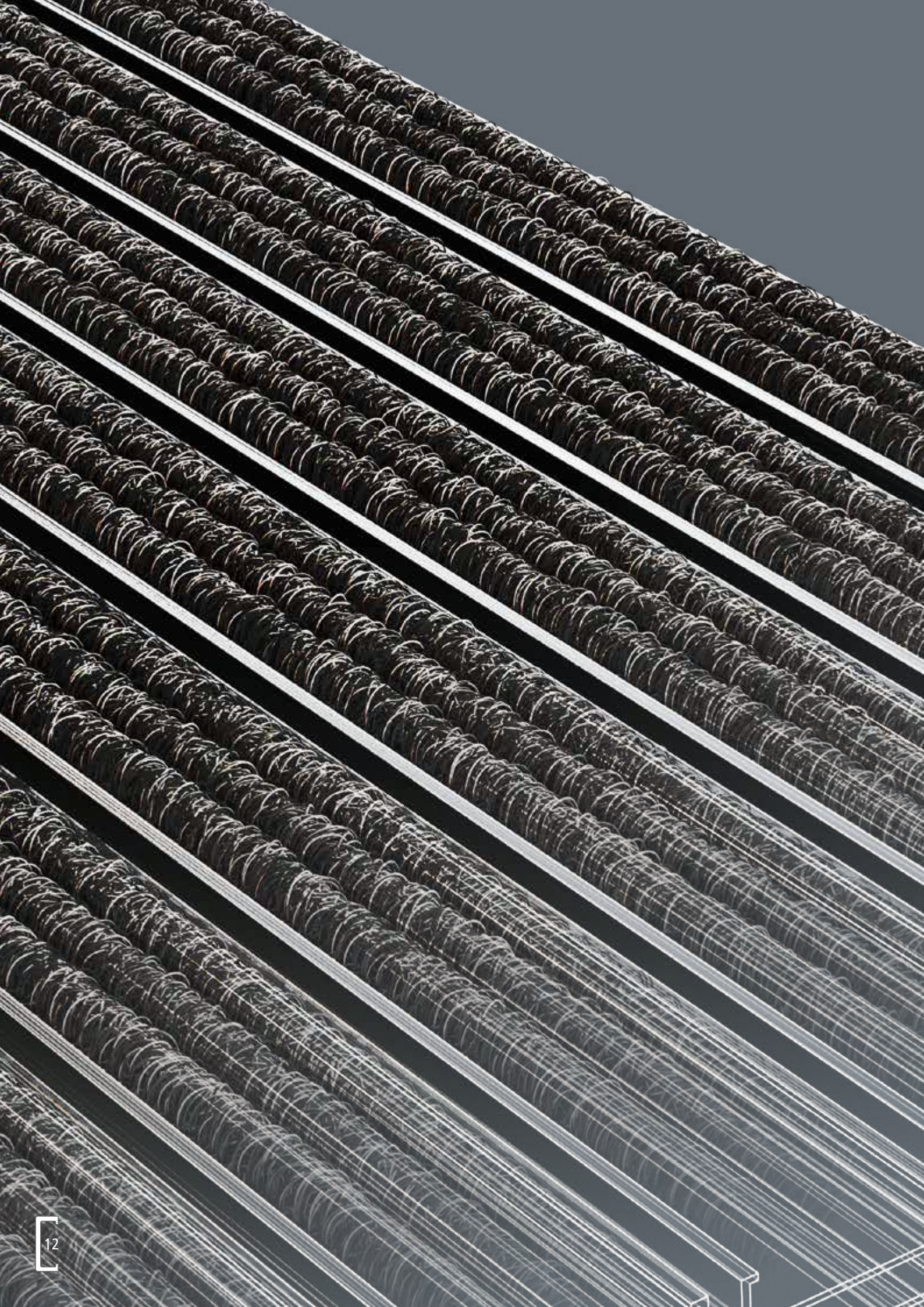
We conserve resources in production and work climate-consciously.



AWARD-WINNING

Our products are awarded.

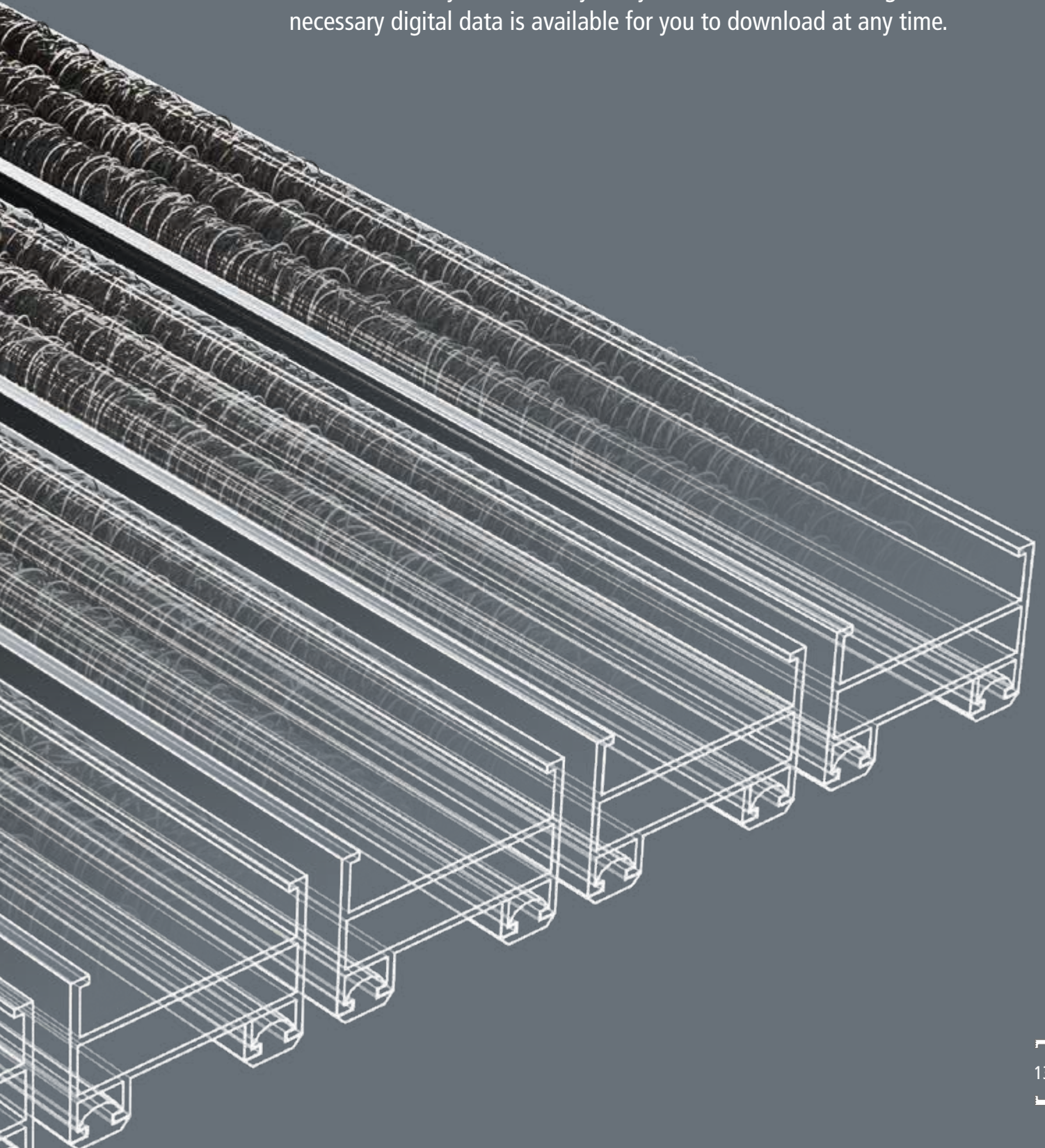




SMART PLANNING AND CONSTRUCTION. BIM-BASED WORK.



Working digitally is business as usual for you. And for us too. We also use BIM (building information modelling) – the efficient, model-based process for joint project planning and implementation. For example, you can integrate our Top Clean doormat systems directly into your three-dimensional digital model. The necessary digital data is available for you to download at any time.



HAVE A LOOK!



Grand Casino (Liechtenstein)

Requirement: Impactful implementation of the corporate logo

Solution: Top Clean TREND® with ribbed carpet and logo



Kongahälla Shopping Center (Sweden)

Requirement: Optimum protection against dirt and moisture plus orientation for the visually impaired

Solution: Top Clean TREND® with tactile guidance system



FC Gruppe, Karlsruhe (Germany)

Requirement: Enhance the office building entrance

Solution: Top Clean TREND® with grooved rubber and cassette brush



FERRARI Showroom, Bologna (Italy)

Requirement: Reflect the brand identity in the mat design

Solution: Top Clean STABIL with ribbed carpet and Ferrari red scraper bar



Educational Centre Uster (Switzerland)

Requirement: Stylish and durable entrance area for frequent use

Solution: Top Clean TREND® with ribbed carpet and scraper bar



Robinsons Orchard Road, Singapore

Requirement: Exclusive design entrance with individual rounding

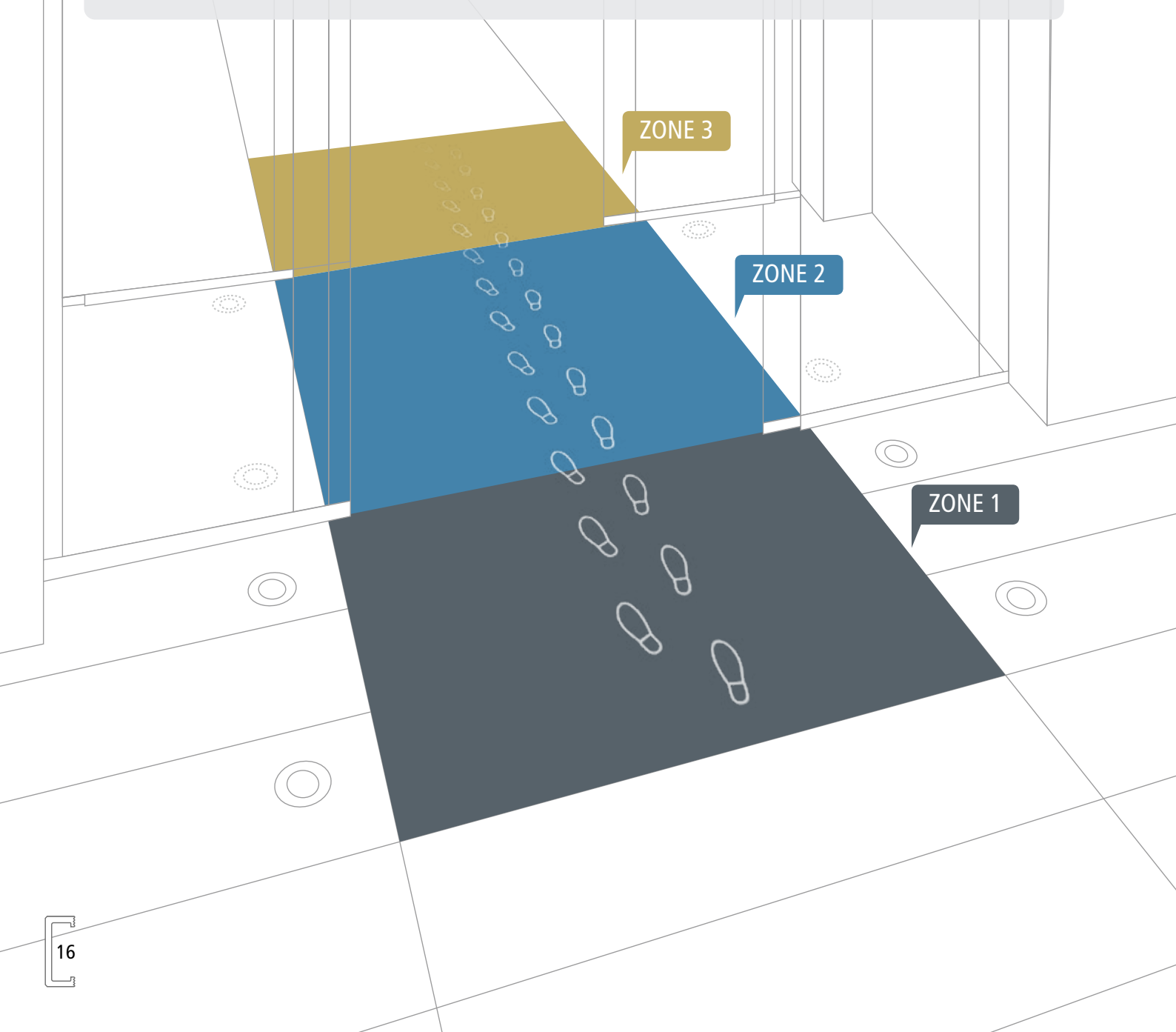
Solution: Top Clean TREND® CURVE with ribbed carpet

FOR SYSTEMATIC PROTECTION. ASSURED VALUE FOR MONEY.

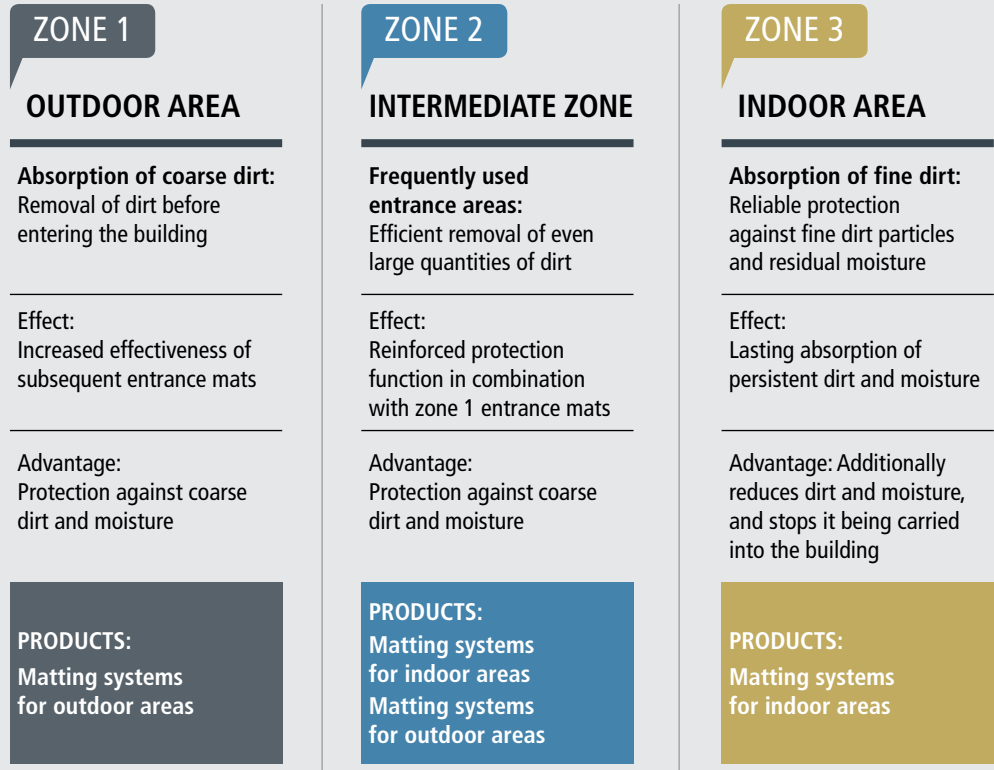
Our 3-zone solution takes dirt collection to a new dimension. With a universal design, our entrance matting systems can be ideally aligned with the respective requirements – be it indoors, outside the building or in the intermediate zones – and combined to form perfect individual clean-off zones.

Systematic step by step: Our profile inlays with various combinations of materials ensure that moisture and coarse dirt are reliably removed from shoe soles and not carried further indoors – before people actually enter the building and especially in frequently used entrance areas.

We also take a systematic approach to the issue of safety. Protection against moisture and dirt, combined with the anti-slip function, lead to a lasting reduction in the risk of accidents and ensure greater safety.



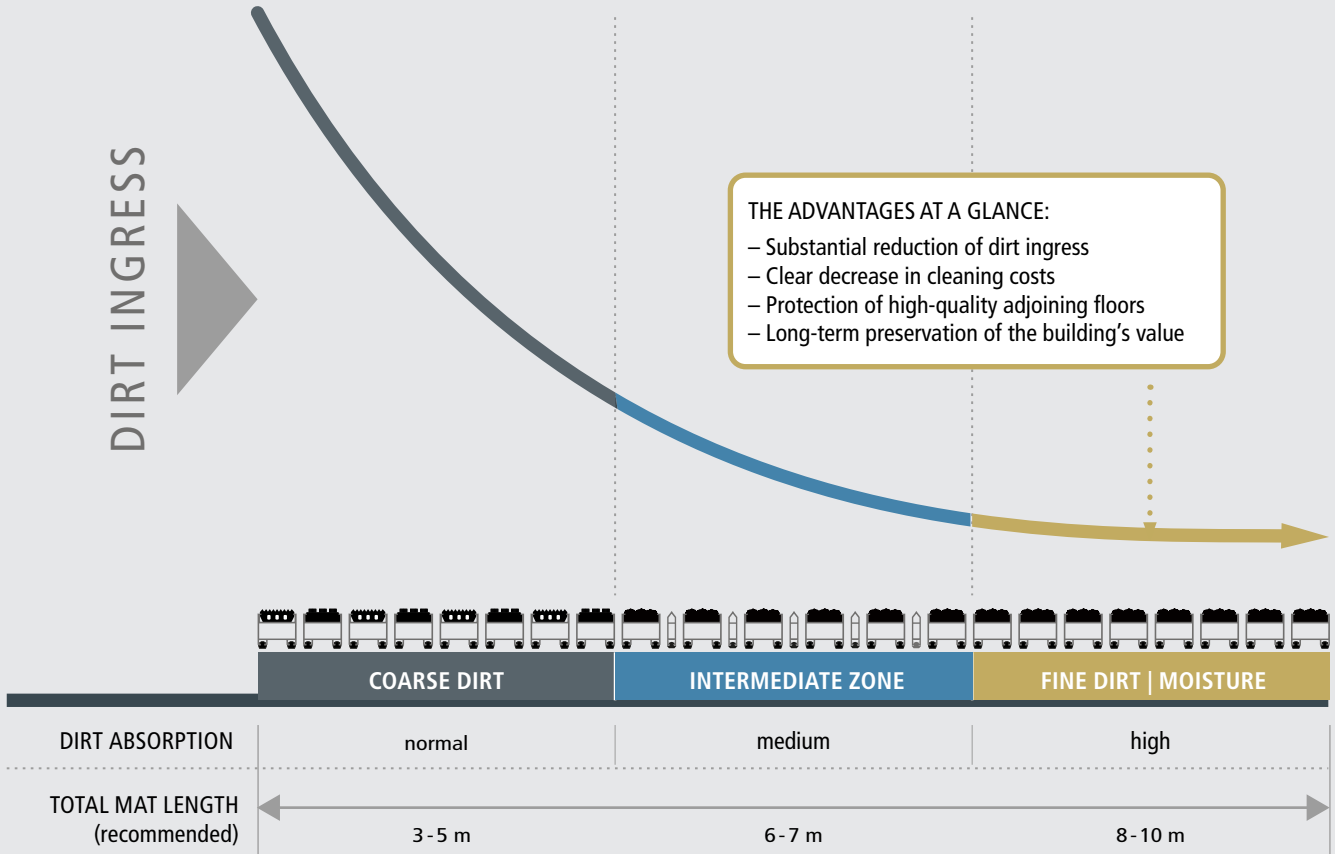
THREE CLEAN-OFF ZONES. COMBINED IN A SINGLE SOLUTION.



DIRT INGRESS

THE ADVANTAGES AT A GLANCE:

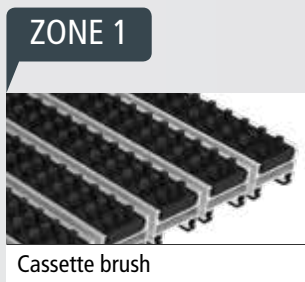
- Substantial reduction of dirt ingress
- Clear decrease in cleaning costs
- Protection of high-quality adjoining floors
- Long-term preservation of the building's value

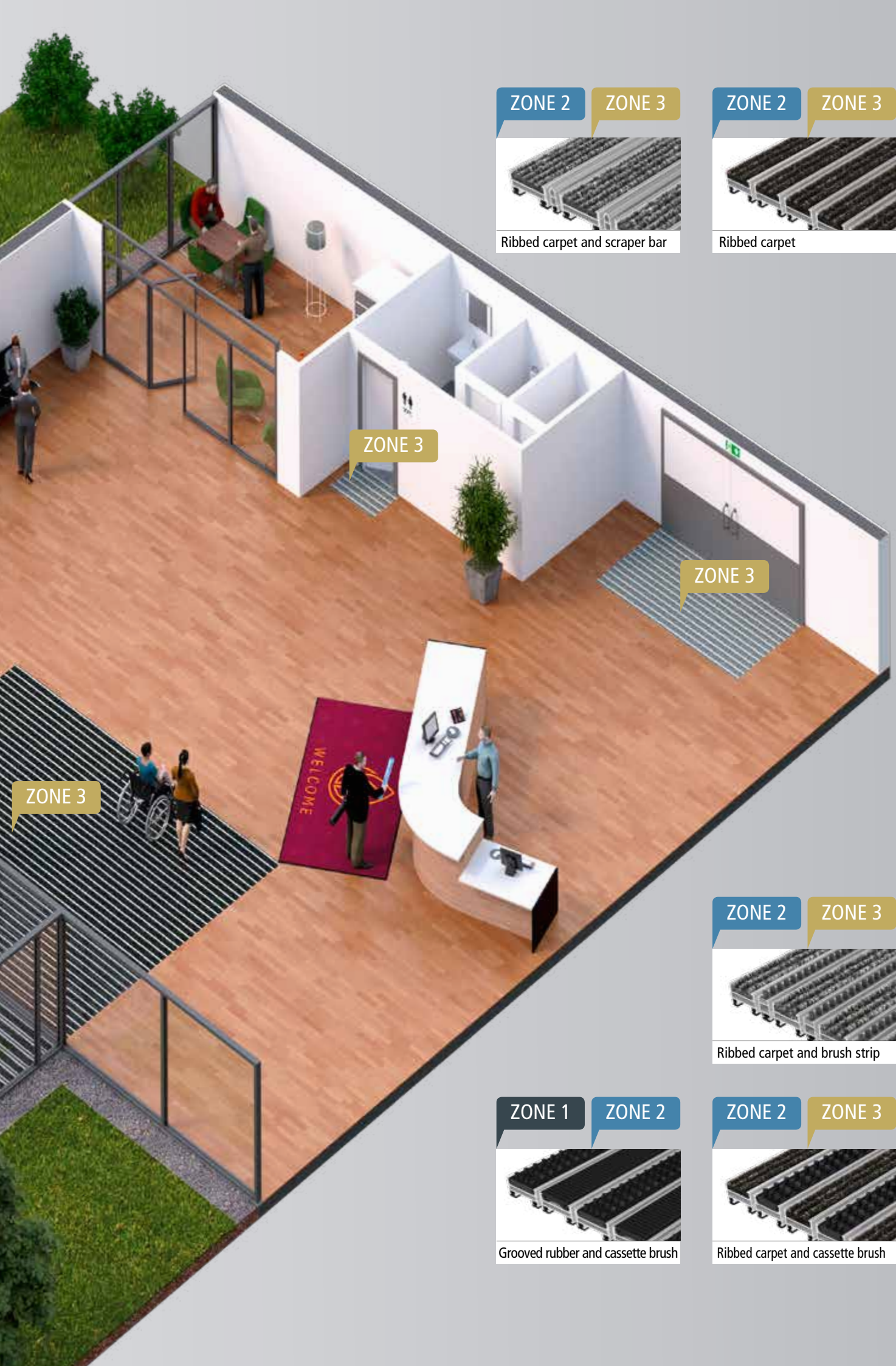


THE IDEAL LEVEL OF PROTECTION. IN EVERY AREA.

An entrance matting system is most effective if the profile, material and length are combined in the ideal way to meet requirements. This is the only way to achieve a lasting reduction in the quantities of dirt and moisture. And it is the only way to minimise the risk of slipping, protect adjoining floors, cut cleaning costs and preserve the value of the property. This is true not only for the entrance area, but also for many other doorways to a building. Simply everywhere where a substantial amount of dirt is to be found.

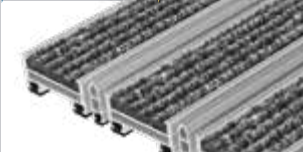
To achieve the optimum effect in every area, we develop and produce the appropriate system solution "Handmade in Germany": based on different installation heights and material strengths and a specially selected combination of materials.





ZONE 2

ZONE 3



Ribbed carpet and scraper bar

ZONE 2

ZONE 3



Ribbed carpet

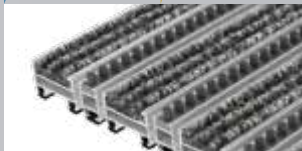
ZONE 3

ZONE 3

ZONE 3

ZONE 2

ZONE 3



Ribbed carpet and brush strip

ZONE 1

ZONE 2



Grooved rubber and cassette brush

ZONE 2

ZONE 3



Ribbed carpet and cassette brush

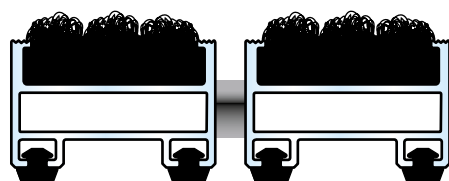
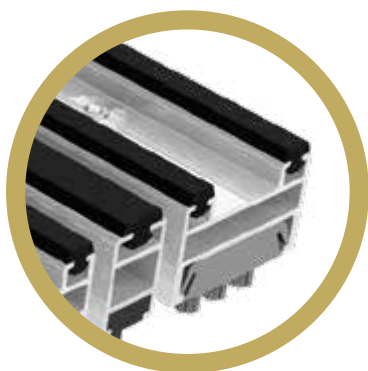


PREMIUM
ALUPROFILE MATS

STANDARD
ALUPROFILE MATS

PREMIUM OR STANDARD? THE CRUCIAL DIFFERENCE.

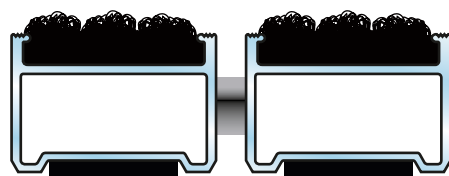
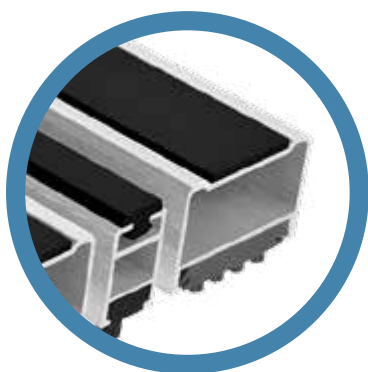
Even the slightest impact noises on the floor of a building can significantly increase the overall level of ambient noise. We believe impact sound insulation is therefore an essential element of any entrance matting system, and by creating a minor break in the insulation of the entrance matting system and fitting all our profiles with high quality sound insulating components, we have virtually eliminated this noise. This maintains our goal of setting new standards through the constant evolution and development of our proven systems. As a result, our highly effective impact sound reduction solution is now integrated into all mat systems that feature brush strips, scraper bars, ribbed carpet, grooved rubber or cassette brushes, guaranteeing reliable, long-lasting sound protection.



WITH PREMIUM
SOUND INSULATION

PREMIUM ALUPROFILE MATS

The outstanding impact sound insulation is based on highly effective grooved rubber, which is incorporated into the aluminium profile. The grooved rubber provides excellent sound insulation on the underside of the profile, whilst also ensuring that moisture is removed reliably. Our PREMIUM aluprofile mat range includes the Top Clean TREND®, STABIL, OBJEKT and GREEN MOTION variants.



WITH STANDARD
SOUND INSULATION

STANDARD ALUPROFILE MATS

In the case of the less expensive alternative, the polyethylene foam adhered onto the underside of the aluminium profile ensures the customary sound insulation. Our STANDARD aluprofile mat range includes the Top Clean CLASSIC and ROBUST variants.



PRACTICAL TIP:

Large entrances in sophisticated architecture benefit from the superior size and impressive performance of our Top Clean STABIL XL with its extremely durable profile system.

A QUESTION OF PROFILE. FOR ALL LOADS.

Stations, airports and shopping centres are subject to a particularly great strain due to their high visitor frequencies. An administrative or office building places completely different demands on an entrance matting system. And an industrial company, in turn, has its own special challenges. There is therefore no one solution that fits all. We precisely examine the entrance area concerned and the individual load situation.

INTERESTING FACTS ON THE HEIGHT AND WIDTH OF THE PROFILE

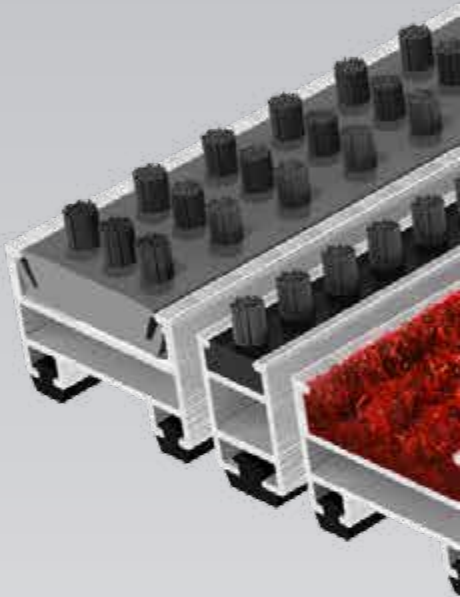
- The profile height depends on the entrance area concerned, or the available recess.
- If the mats are only walked over by people, we recommend the heights of 10/12 mm, 17 mm or 22 mm.
- The ideal heights in the case of moderate strain, for instance when the mats are driven over by transport trolleys, are 17 mm or 22 mm.
- In the case of extreme strain, for instance when the mats are driven over by forklift trucks or cars, the heights of 22 mm, 27 mm and 42 mm are more appropriate.
- One important thing to note is that the higher the mat, the greater the amount of dirt that can be collected in the gaps.



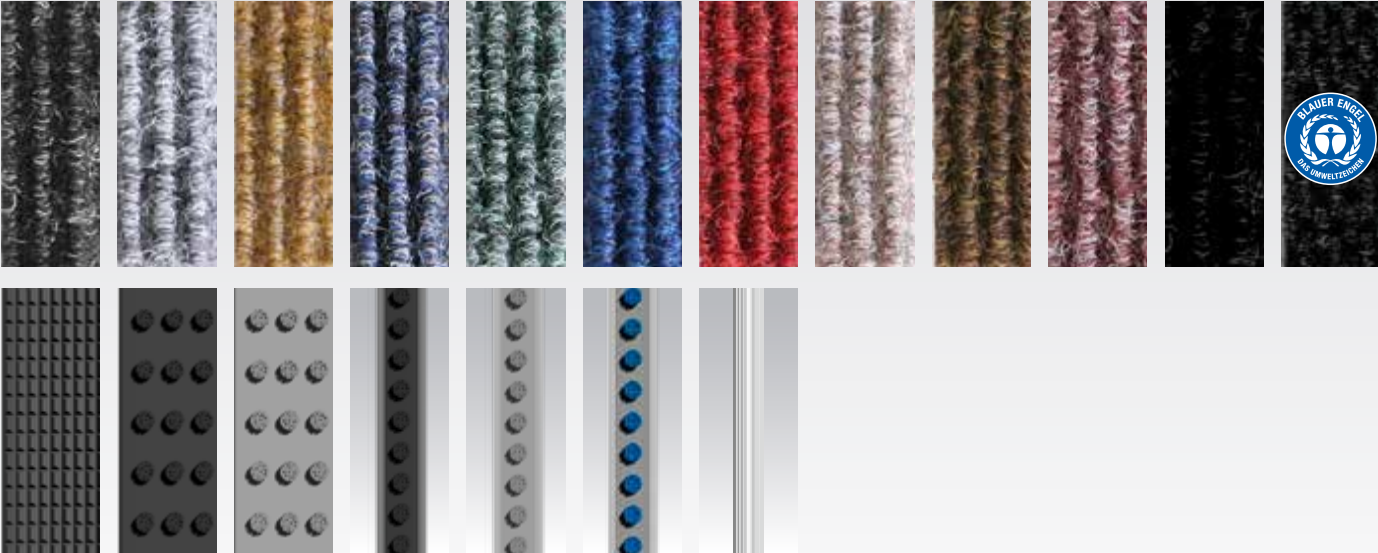
FULFILLING ALL WISHES. EXCLUSIVE COLOURING.

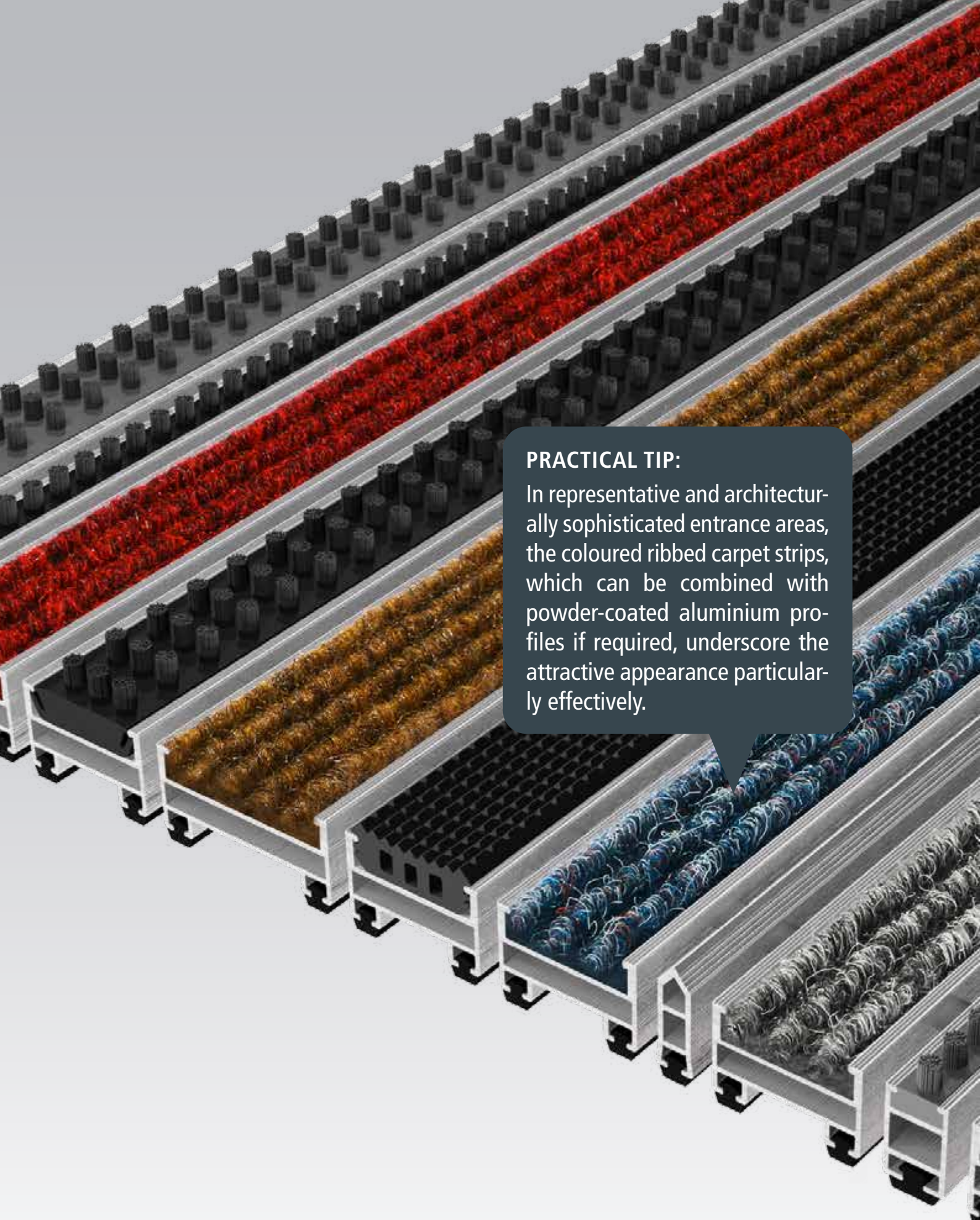
Harmonious or rich in contrast, subtle or provocative? Hardly any design element has such an impact and plays such a role in establishing the atmosphere in rooms as colour. It goes without saying that this is particularly true of the entrance to a building.

Our wide range of different colour options will give your entrance area a distinctive individual appearance, set effective accents and bring your corporate identity to life right when people enter the building. What's more, you can choose from countless possible combinations – for every design strategy, in fitting with every floor covering and with creative freedom for your own ideas.



OVERVIEW OF OUR WIDE RANGE OF POSSIBLE COMBINATIONS





PRACTICAL TIP:
In representative and architecturally sophisticated entrance areas, the coloured ribbed carpet strips, which can be combined with powder-coated aluminium profiles if required, underscore the attractive appearance particularly effectively.

UPGRADE TO CLEANING EFFECT. THANKS TO SCRAPERS AND BRUSHES.

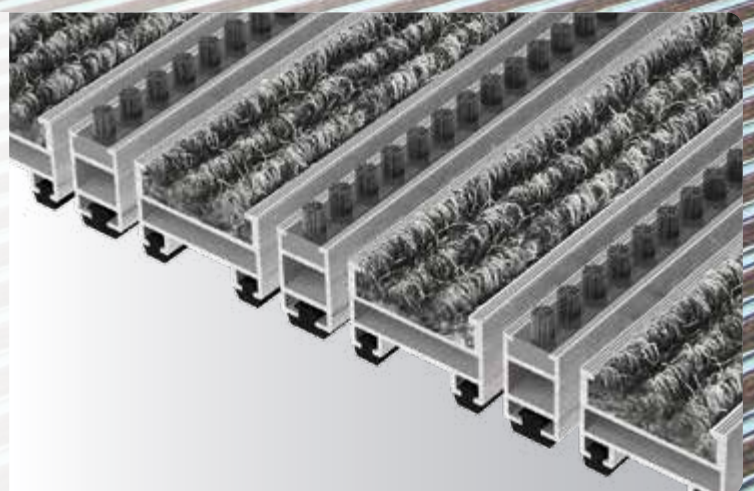
Stones, sand and soil on the shoe sole not only lead to unwanted dirt, but can also cause damage to high-quality floors. To see that we meet the toughest demands not only in terms of design, but also in terms of functionality, you simply need to look at our scraper bars and brush strips – which come complete with exclusive sound insulation!

In our PREMIUM and STANDARD entrance matting systems, the scraper bars and brush strips lead to a lasting increase in the cleaning effect. And they do so everywhere that involves great load combined with a high level of dirt.

ENTRANCE
MATTING SYSTEM
WITH SCRAPER BAR



ENTRANCE
MATTING SYSTEM
WITH BRUSH STRIP





PRACTICAL TIP:

Even in frequently used entrances at sports venues or in winter sports areas, you can completely rely on the cleaning effect of the scraper bars and brush strips. The smallest particles are literally "brushed" out of the shoe soles.



DEVELOPED FOR TOMORROW. ALREADY OUTSTANDING TODAY.

Sustainability is extremely important for us as a company, and for our entire product range. It therefore makes us all the more proud and confirms our commitment to environmental protection and climate protection that our Top Clean TREND® XL GREEN MOTION product development has been awarded the prestigious BLUE ANGEL eco-label.

The BLUE ANGEL has been setting standards for the protection of people and the environment for decades. The eco-label's independent experts examine products based on strict criteria and guarantee high-quality products with top marks in environmental protection.

Top Clean TREND® XL GREEN MOTION

- 100% recyclable components
- Completely PVC-free mats
- Free-of-charge return for reuse in the production cycle
- Eco-friendly ribbed carpet made of unmixed, latex-free, flame-retardant and durable polypropylene
- Naturally anodised aluminium profile with outstanding corrosion resistance

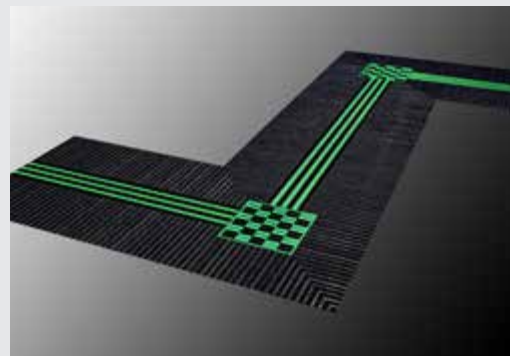
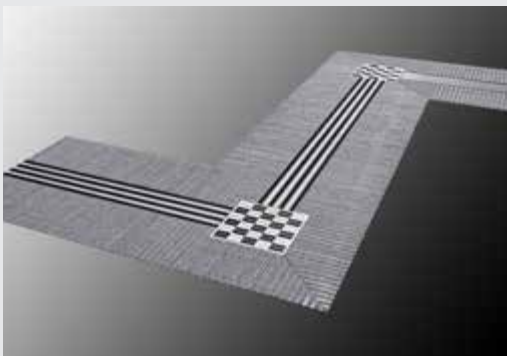


SEEING AND FEELING. ORIENTATION WITH ALL THE SENSES.

Visual guidance and orientation systems are essential nowadays, especially in the entrance areas of public buildings. However, even more than that is needed. Only a tactile guidance system provides reliable orientation for visually impaired and blind people. To meet both these requirements, we have developed a concept with floor indicators to point the way.

SAFE CLEAN TREND WITH LUMINESCENT FEATURES

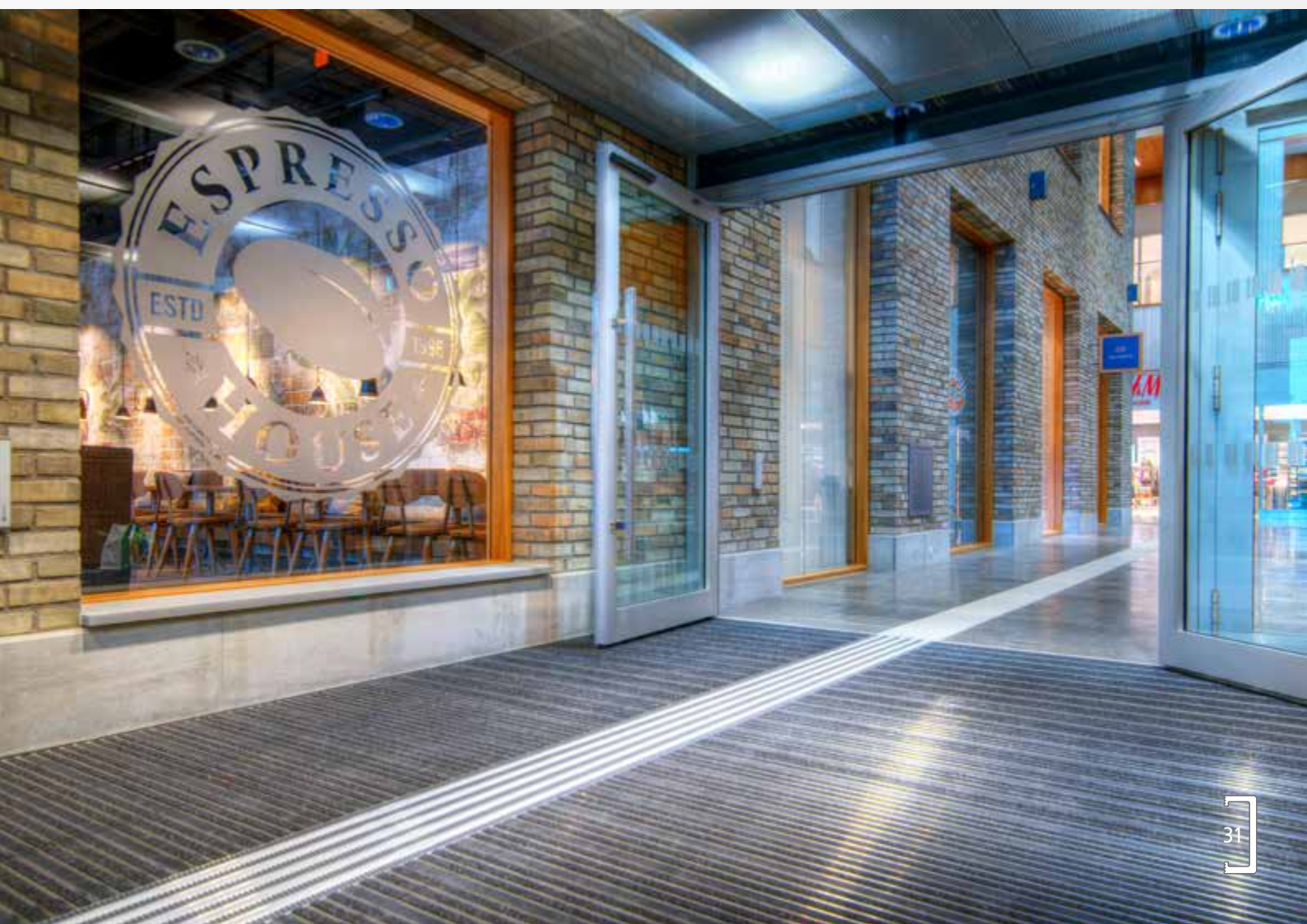
Using white safety strips, we create a sharp contrast to the remaining components and make the entrance mat particularly visible – even for those with limited vision. The special pigments in the safety strips store light energy and also provide a sustained luminous effect if the lighting suddenly fails.



The luminescent feature makes a great addition to other safety elements such as luminescent emergency exit signs – a feature that leads the way both literally and figuratively.

SAFE CLEAN TREND WITH ADDITIONAL TACTILE GUIDANCE SYSTEM

So that people with physical disabilities and visual impairments can find their way safely, we offer the luminescent safety strips of Safe Clean TREND in combination with our tactile guidance system. In this way, by means of orientation with all the senses, you can achieve a high level of safety in your entrance area.

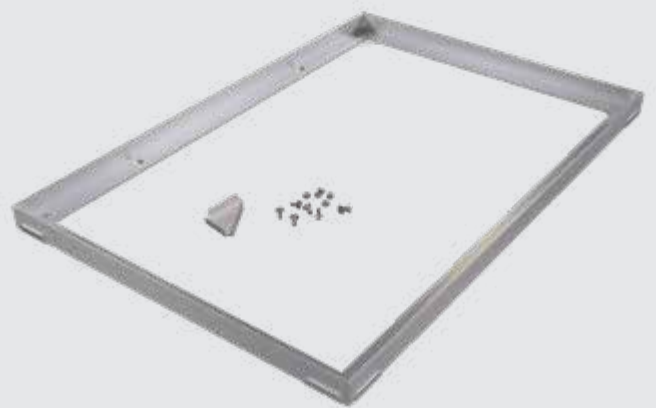


PERFECTION IN EVERY DETAIL. HIGH-PRECISION ACCESSORIES.

Numerous details turn our solutions into the perfect matting systems. This includes high-quality accessories, precise installation, an exact fit and reliable functionality with guaranteed easy cleaning. Be it angle frames, ramped edge frames or dirt collection trays, our accessories are as flexible as us and our entire product range. Just get in touch and we'll provide you with extensive, personal advice.

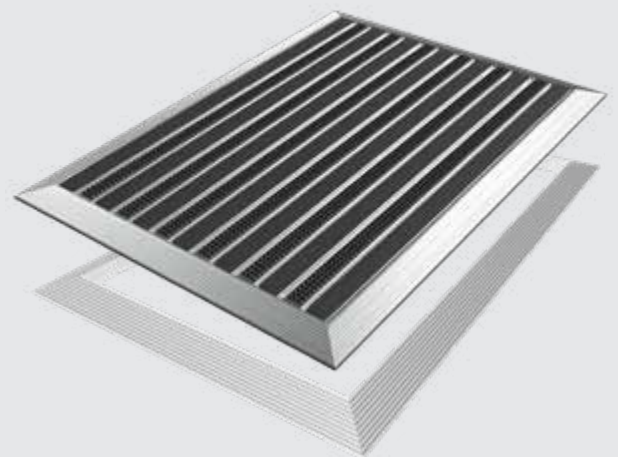
ANGLE FRAMES

The angle frames ensure that the matting system is optimally anchored. Regardless of whether they are made of high-quality stainless steel or aluminium, in the basic variant or with special shapes, we will adapt the angle frames together with the corresponding corner connections to accommodate your individual requirements.



RAMPED EDGE FRAMES

Even if a subsequent installation without a floor recess is planned, we have the ideal solution. Designed for all Top Clean aluprofile mats with a height of 10/12 mm or 17 mm, the ramped edge frames allow the matting system to be installed quickly on a flat floor. This allows people to walk over the mat safely, with no tripping hazards, even with a wheelchair or buggy.



DIRT COLLECTION TRAYS

Whether they are made of stainless steel or aluminium, our dirt collection trays provide enhanced dirt collection and regulated water drainage. What's more, they do so completely reliably, thus making the trays essential for entrance areas with no roof.







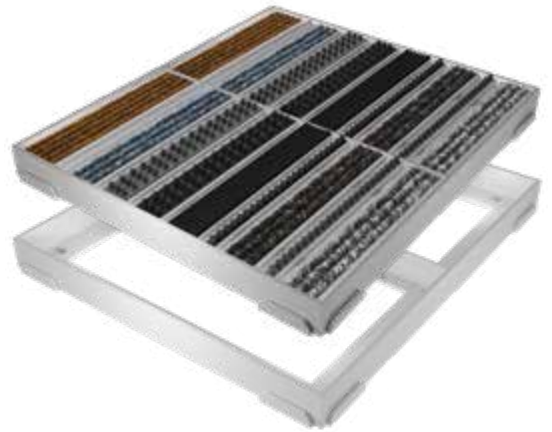
PRACTICAL TIP:

In the case of mats that are not installed in the classic rectangular form, the T-bars provide a clean solution. Their aesthetic advantage is especially clear when combined with polygon-shaped matting systems.

A CLEAR EDGE. THANKS TO ELEGANT T-BARS.

We are perfectionists not only with regard to functionality and quality, but also in terms of appearance. We use our wide range of design options to create tailored solutions that take on the structures, lines and joints of the location in question and adapt perfectly to the floor covering. One possibility here is the visual separation of adjoining entrance mats and areas within a matting system. This is where the aluminium T-bar comes in.

The T-bars are suitable for use both indoors and outdoors. The mat parts can be easily removed in order to clean the mat bed.



READY FOR THE UNEXPECTED? EXCLUSIVE ONE-OFF PRODUCTS.

An entrance that is exactly as you have imagined it and which perfectly reflects the character of the building should have entrance mats that are unique rather than easily replaceable. And we achieve such uniqueness – with a large number of options for real design freedom and attention-grabbing one-off products.

LOGO BARS

You can create an exclusive appearance with a laser-engraved stainless steel profile displaying a greeting, a slogan or the company name. In the case of the high-end solution, the lettering is illuminated with LED technology, giving it an individual touch that impresses visitors from the moment they arrive.



POWDER-COATED PROFILES

An accomplished mat edition is based on individuality – and thus on colours chosen by you. With powder-coated frames and aluminium profiles in all RAL colours, we draw on countless options in design and in combination with the colours of our ribbed carpet and brush inlays.



ANODISED PROFILES

A high-quality finish makes your one-off item perfect. Coloured anodised frames and aluminium profiles make for a fascinating and perfectly matched design. Be it in gold, black or bronze, the exclusive anodised finish sets the entrance matting system apart from the rest. It also has some impressive functional advantages. The anodisation makes the surface particularly hard and scratch-proof, while providing additional protection against corrosion or chemical influences.



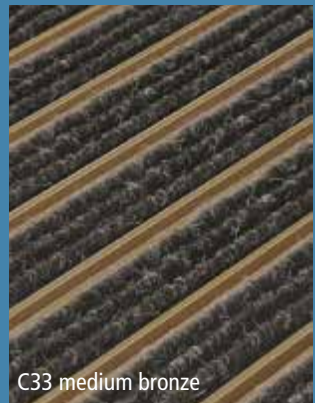
Ev3 gold



C35 black



C31 stainless steel



C33 medium bronze



PRACTICAL TIP:

Form follows function – this is also a fundamental principle of our work. Following the architectural planning, we implement mat designs starting at a minimum radius of around 60 cm.



BOLD, SWEEPING DESIGN. WITH NO ROUGH EDGES.

Be it for your logo, corporate design or interior design, anywhere that rounded edges are important for your corporate identity we will create corresponding, attention-grabbing curves on your entrance mats. No matter what rounding, in what dimensions and combined with what profile inlay, we will give your entrance area just the curves it needs. And we'll find an equally individual and effective way to integrate your logo, a unique design or lettering into the profile system.

MORE THAN JUST A MAT. INDISPENSABLE FOR YOUR IMAGE.

Surface lay barrier mats are, of course, highly recommended when it comes to collecting dirt in buildings with lots of visitors or in areas subject to great strain. That goes without saying. However, our high-quality, long-lasting surface lay barrier mats have much more than that to offer entrances, corridors, lifts and reception areas. In addition to their ability to collect dirt and moisture, they also perform other functions.

MULTICLEAN

Particularly in frequently used areas, this all-rounder mat reliably collects dirt, protects floor coverings, minimises cleaning costs and allows people to walk over it safely thanks to its anti-slip features. The mat is lightfast, colourfast, free of PVC and also suitable for rooms with underfloor heating.

LOGOCLEAN

This PVC-free mat provides all the advantages of a high-quality dirt collector, while at the same time performing a promotional function. We create designs in line with customer specifications in excellent colours and with a high print quality on a hard-wearing nylon surface. This mat, too, is suitable for rooms with underfloor heating.

LOGOCLEAN OUTDOOR

Surface lay barrier mat with all-round rubber edging, suitable for outdoor use. Can be delivered in more than 60 colours, designed in line with your wishes. The studs on the underside ensure anti-slip installation.

COUNTER MAT

This polyester mat with anti-slip rubber backing is suitable for a wide range of uses, such as events, point of sale, advertising, giveaways and merchandising. For an attention-grabbing presentation, the mat can be personalised as you wish and is also washable.



Lowry Outlet

BIBBY

5

Salford

TURKUT

24

AJ Bell
Stadium

THINKING BIG. PROVIDING GREAT SUPPORT.

Yes, we like to think big. "Think big" is also our motto when it comes to the service we provide for you. We therefore offer you an all-round carefree package with support in every area from a single source. Our experienced service team is there for you at all times – ready to provide expert advice, forward-looking planning, precise measurement and exact installation.

Just rely on us!



PRACTICAL TIP:

Incidentally, you can find brief explanatory videos and practical instructions to facilitate the installation of our frames and matting systems on our homepage under GEGGUS TV – we simply leave no question unanswered.



FOOTFALL

FOOTFALL LTD

Business Park, Ballybrit
Unit 55c Briarhill
GALWAY H91 TR2K
Unit 55c Briarhill Business Park, Ballybrit, Galway. H91 TR2K
Phone n. +353 91 792 500
e-Mail: info@footfall.ie
Internet: www.footfall.ie

This brochure was printed with neutral impact on the environment.

